



**To:**  
**All members of the**  
**Community Wellbeing and Housing**  
**Committee**

*Please reply to:*  
Contact: Melis Owen  
Service: Committee Services  
Direct line: 01784 446224  
E-mail: m.owen@spelthorne.gov.uk  
Date: 03 January 2025

### Supplementary Agenda

### **Community Wellbeing and Housing Committee - Tuesday, 7 January 2025**

Dear Councillor

I enclose the following appendix which was marked 'to follow' on the agenda for the Community Wellbeing and Housing Committee meeting to be held on Tuesday, 7 January 2025:

**9. Eclipse Leisure Centre Additional Spend- Appendix D**

**3 - 6**

To consider the proposed works and additional spend at the Eclipse Leisure Centre.

Yours sincerely

Melis Owen  
Corporate Governance

To the members of the Community Wellbeing and Housing Committee

Councillors:

S.M. Doran (Chair)

O. Rybinski (Vice-Chair)

M. Arnold

M.M. Attewell

C. Bateson

M. Bing Dong

L.H. Brennan

S.A. Dunn

A. Gale

R.V. Geach

K.M. Grant

A. Mathur

**Spelthorne Borough Council, Council Offices, Knowle Green**

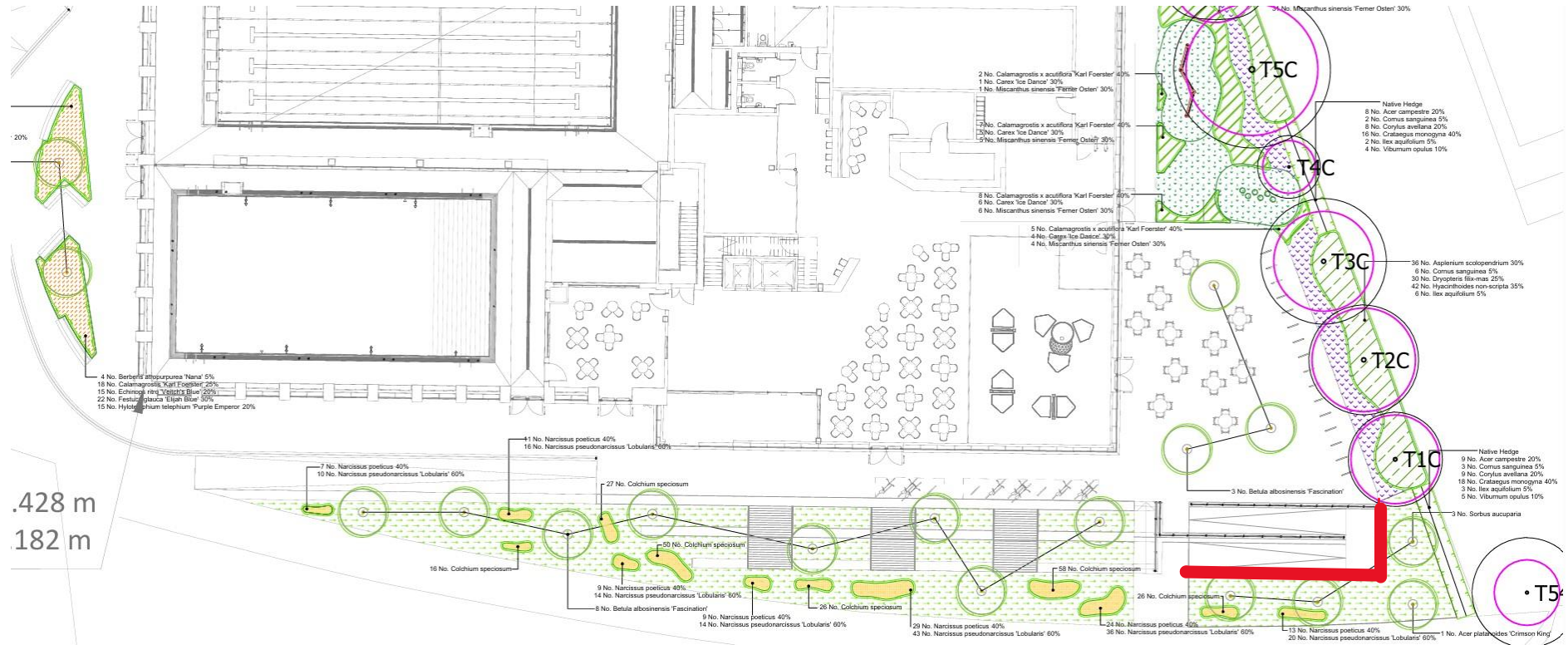
**Staines-upon-Thames TW18 1XB**

[www.spelthorne.gov.uk](http://www.spelthorne.gov.uk) [customer.services@spelthorne.gov.uk](mailto:customer.services@spelthorne.gov.uk) telephone 01784 451499

Substitute Members: Councillors: S.N. Beatty, M. Beecher, T. Burrell, R. Chandler,  
S. Gyawali, S.C. Mooney, J.A. Turner and P.N. Woodward

# Appendix D

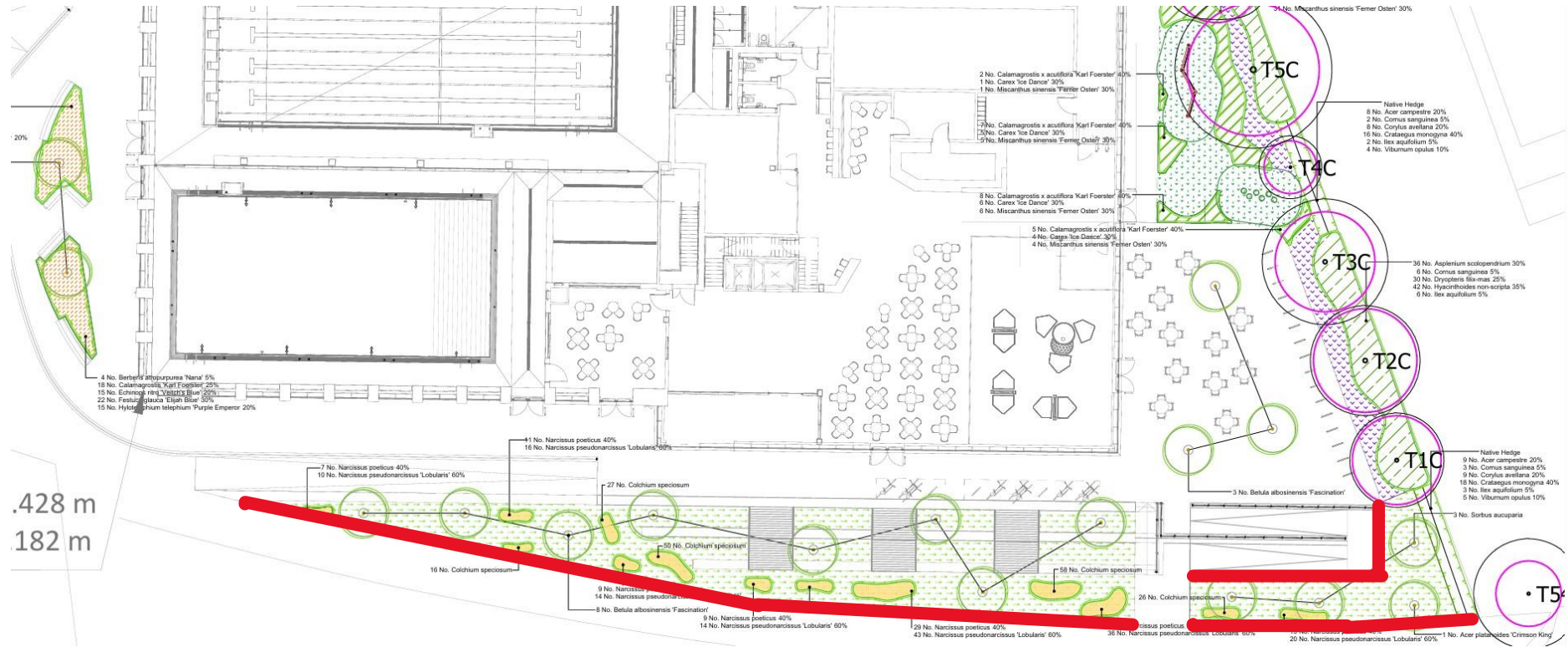
## Option 1



Key:

Balustrade:

# Option 2

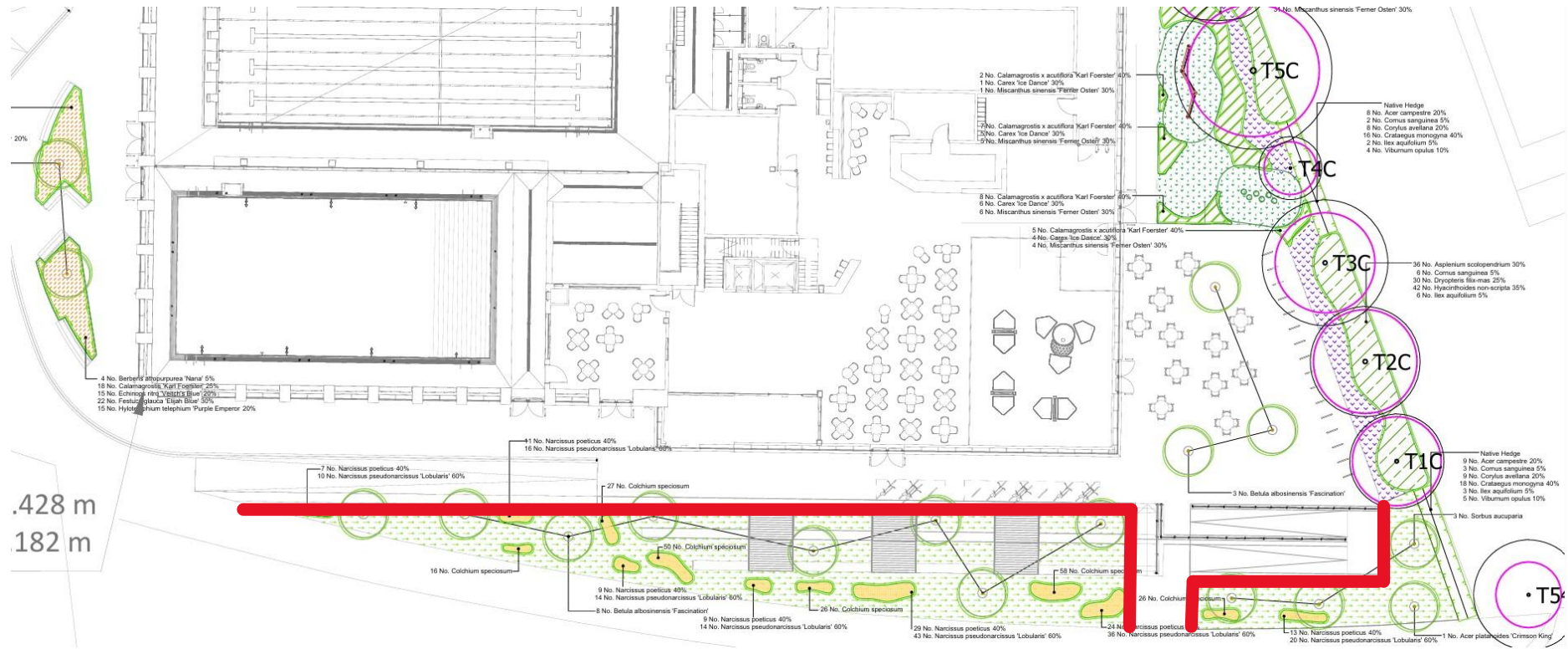


Key:

Balustrade: █



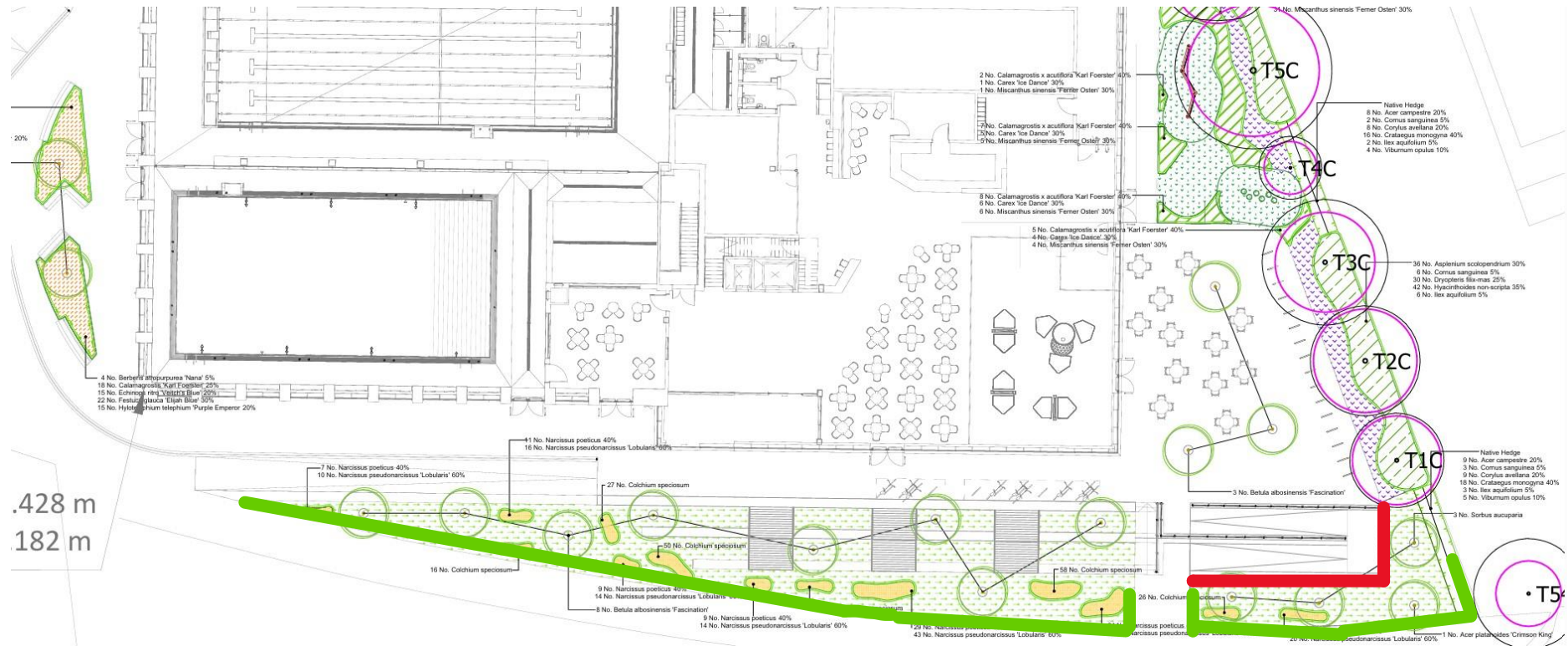
# Option 3



Key:

Balustrade: █

# Option 4



Key:

- Balustrade:
- Box Hedge: