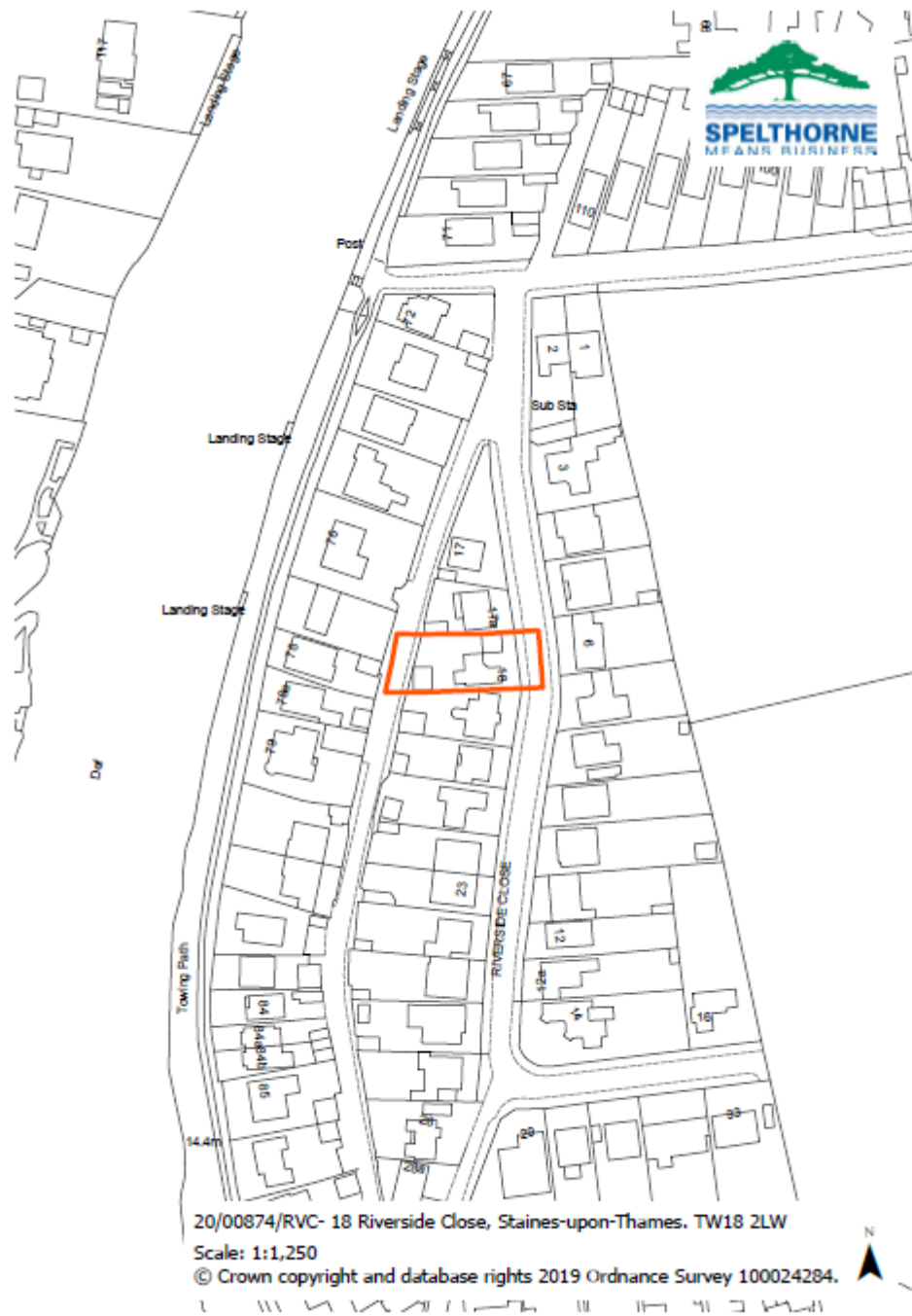


20/00874/RVC – 18 Riverside Close, Staines-upon-Thames, TW18 2LW



The variation of Condition 2 (approved plans) imposed upon planning permission 19/00186/HOU, to allow for alterations to the garage to include an increase in eaves height, the installation of 4 roof lights and alterations to proposed door and window openings

















Existing Site Plans (Prior to Demolition of Previous Garage)



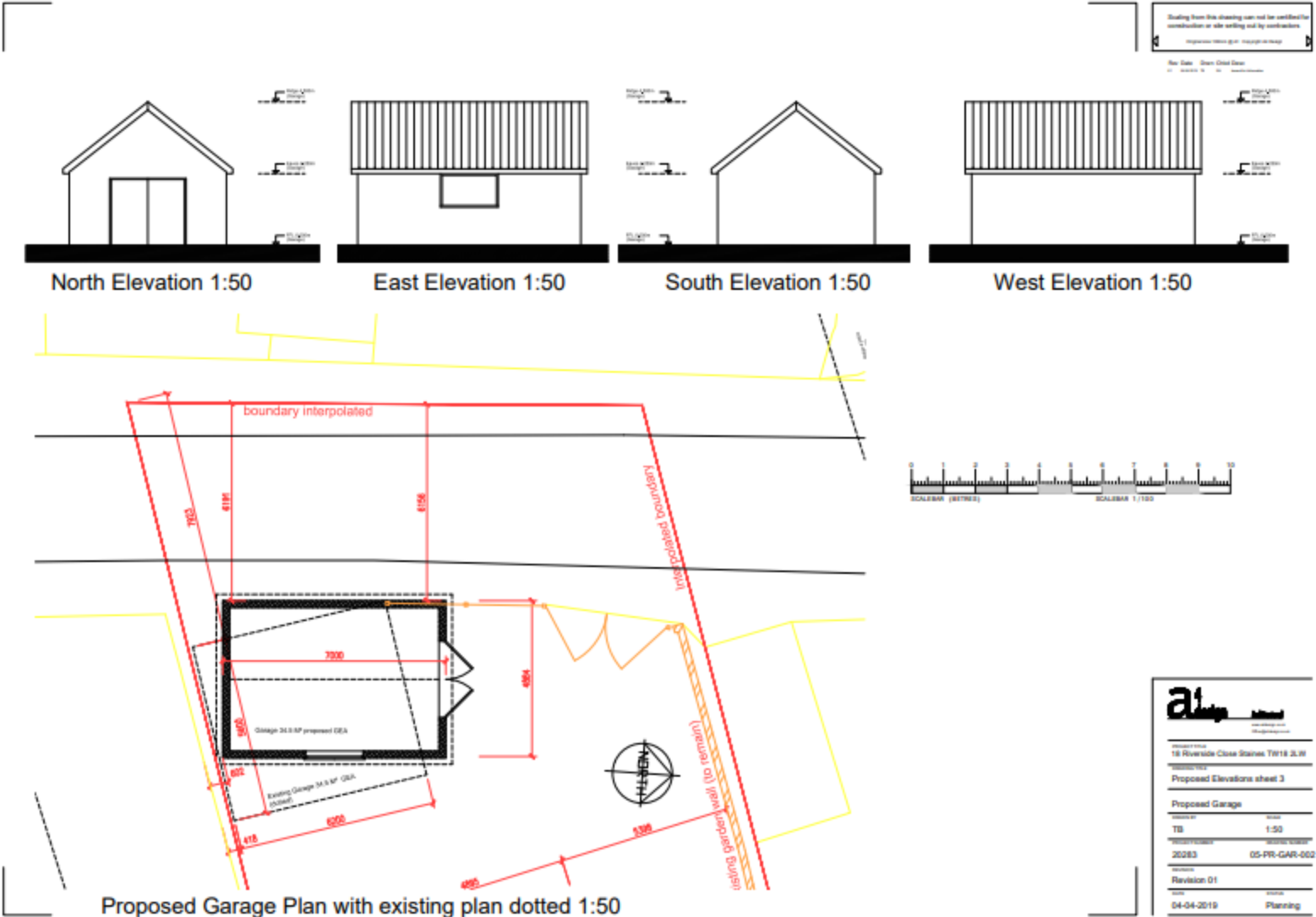
Proposed Site Plans



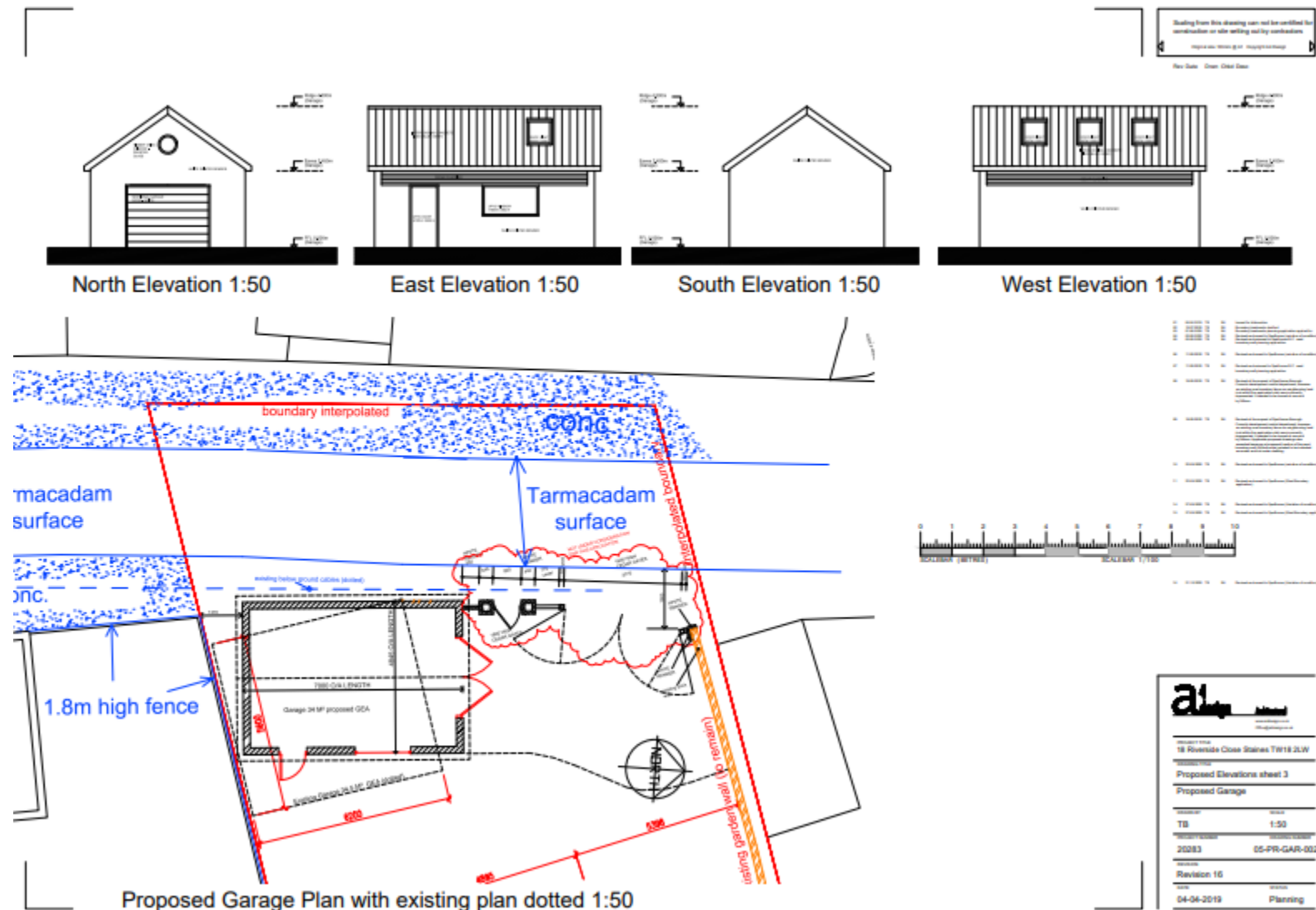
Alterations Constructed at Variance to the Approved Plans of Planning Permission 19/00186/HOU

- The eaves height has increased from 2.55 metres (approx.) to 2.75 metres (approx.).
- An oriel window has been inserted into the front elevation.
- 3 roof lights have been inserted into the western roof slope (road facing elevation).
- 1 roof light has been inserted eastern roof slope (dwelling facing).
- A doorway has been inserted into the eastern flank and a window in this elevation has been revised.
- Cedar Cladding panels (0.4 x 6.5 metres) have been introduced into both flank elevations.

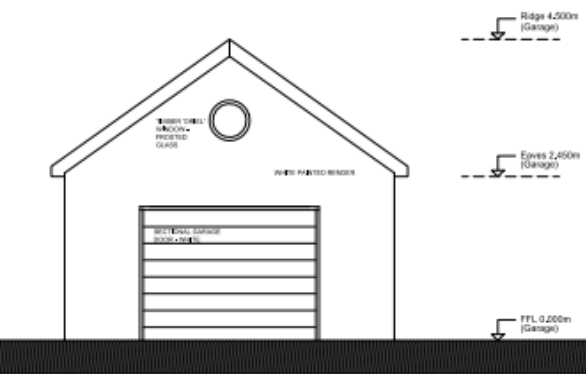
19/00186/HOU – Consented Garage



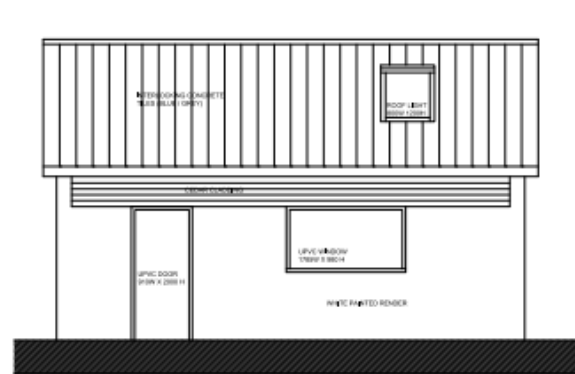
20/00874/RVC – Proposed Garage



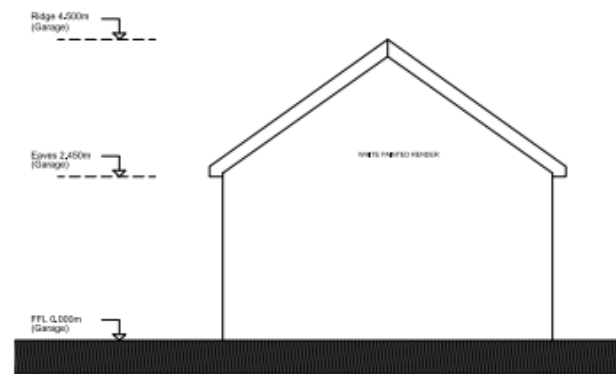
20/00874/RVC – Current Proposal



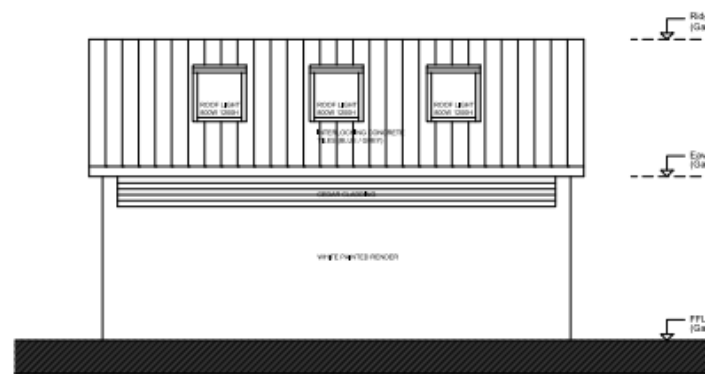
North Elevation 1:50



East Elevation 1:50



South Elevation 1:50

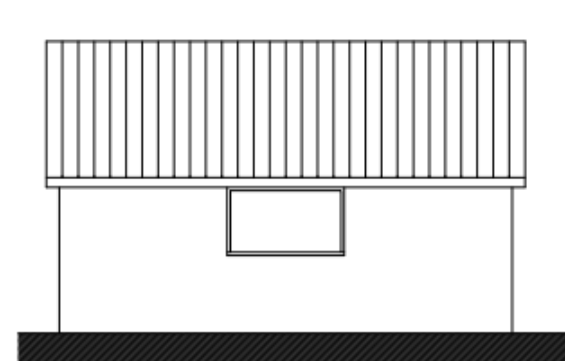


West Elevation 1:50

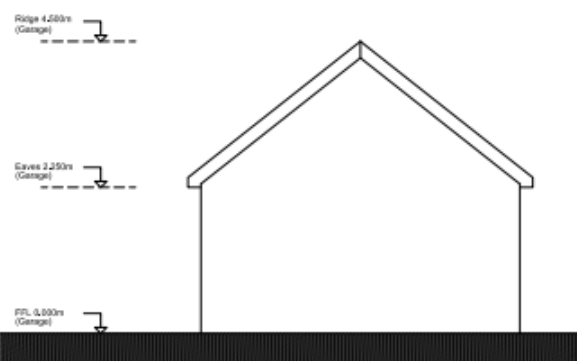
19/00186/HOU – Consented Scheme



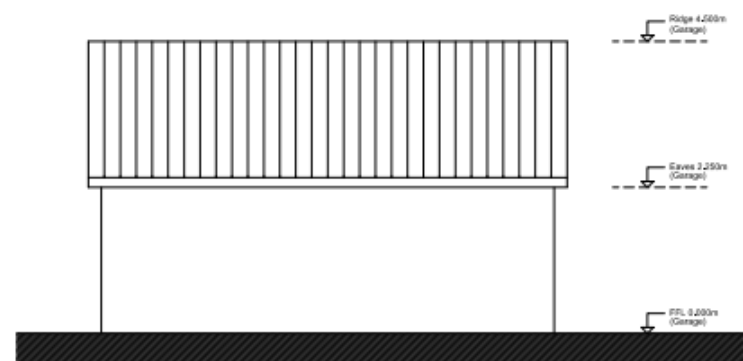
North Elevation 1:50



East Elevation 1:50



South Elevation 1:50



West Elevation 1:50