



**NW Surrey
Alliance**

Working together for better
Health, Care and Wellbeing

Staines 'Pioneer' Health & Wellbeing Centre

Briefing for Spelthorne Borough Council

April 2022

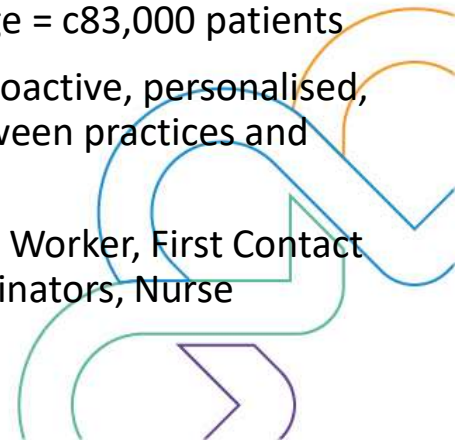
Background

- Staines is 1 of 6 NHS England & Improvement (NHSE/I) Pioneer sites
- Pioneers aim to redesign primary care estates and associated services
- The Pioneer centres are designed to bring together primary care, community care, mental health, hospital out-reach and a range of other voluntary/complementary services and activities to support the wider determinants of health and provide system and local population benefits
- The regeneration of Staines town centre is a key ambition, improving housing, environmental factors and economic prosperity.
- There remains a risk regarding affordability and a need for a CIL contribution.
- The proposed development is progressing through the NHSE/I Pioneer programme and is at the Business Case stage. It will be an important test of new principles to develop modern primary care estate and to build different partnerships with local business, with the potential to use the asset to also bring external revenue into our system.



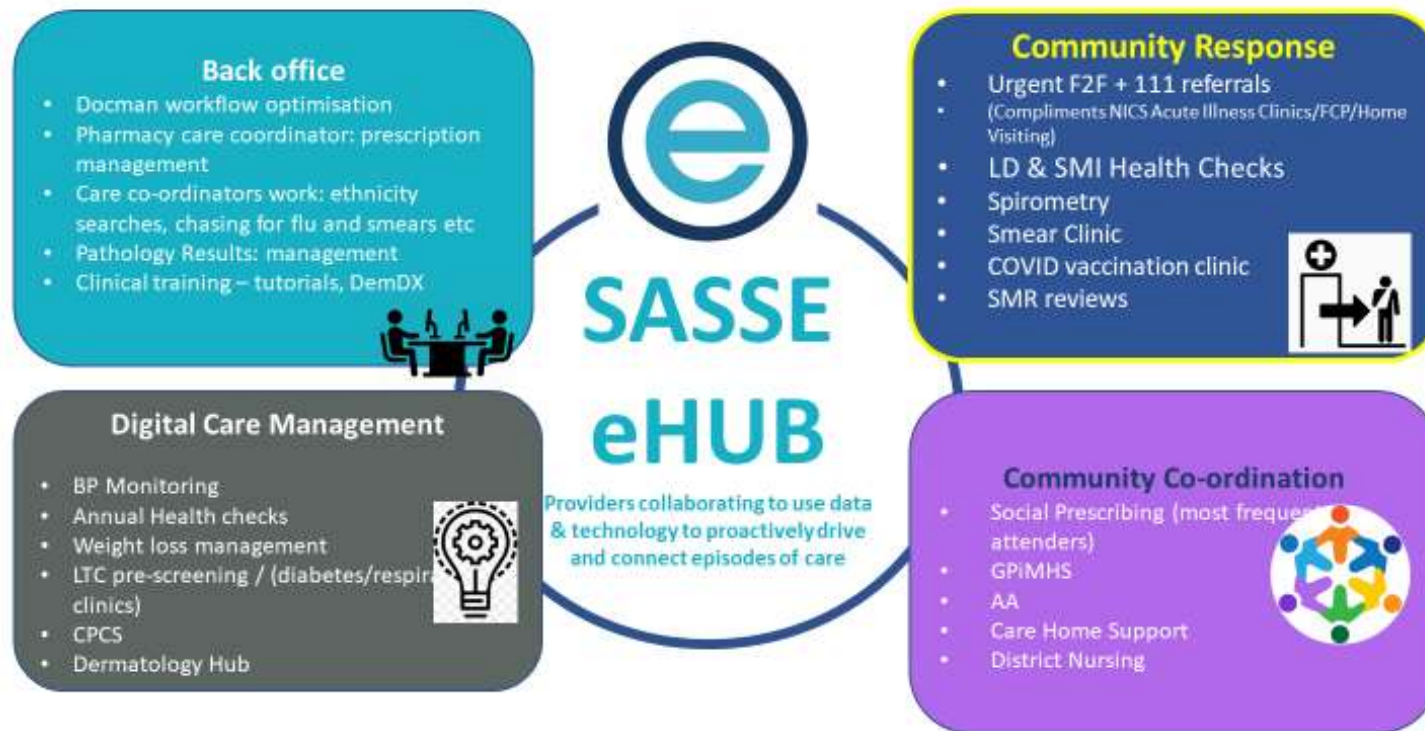
Population & Primary Care Information

- The local population will be served by 3 x GP Practices:
 - Staines Health Group (training practice, Minor Surgery)
 - Knowle Green Practice (training practice, Cancer photo hub)
 - The Hythe (branch) Practice
- The Hythe branch practice is a smaller satellite/spoke to the main Hythe surgery site based on Rochester Rd, Staines (which covers residents in Runnymede) and the branch site serves thousands of Spelthorne patients.
- There is a significant population increase anticipated in the Staines area
- This will increase the collective patient list size from c24,000 to c32,000 forecast by 2035
- The Pioneer centre will also serve 2 x Primary Care Networks (PCNs), total list size coverage = c83,000 patients
- PCNs build on the core of current primary care services and enable greater provision of proactive, personalised, coordinated and more integrated health and social care through better collaboration between practices and others in the local health and social care system.
- PCNs provide multi-skilled workforce including Clinical Pharmacist, Social Prescribing Link Worker, First Contact Physio, Physician Associate, Pharmacy Technician, Health & Wellbeing Coach, Care Co-ordinators, Nurse Associate & Trainee, Community Paramedic & Mental Health Practitioners.



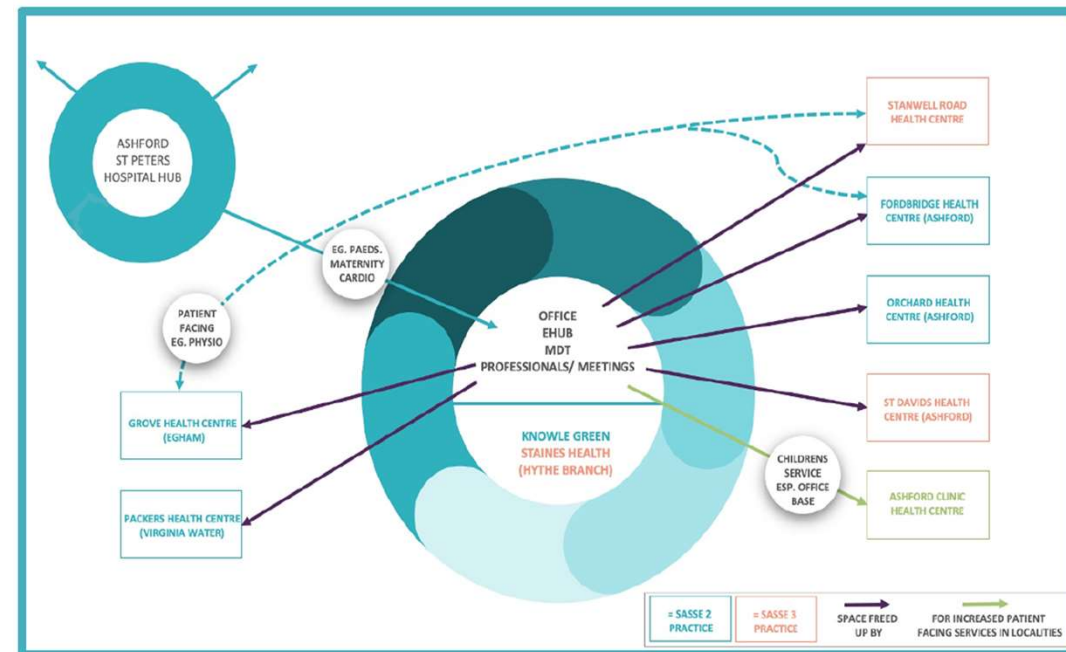
Primary Care Network e-Hub

Services available from the PCN e-Hub, which will move into the new Staines Pioneer centre:



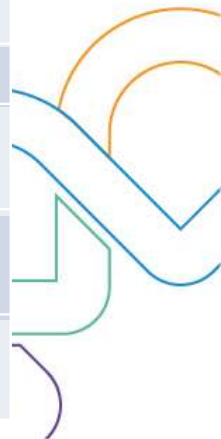
Pioneer Centre Hub

- Serving two PCNs, the Staines Pioneer centre provides space for an expanding primary care workforce.
- By considering the New Pioneer Centre as a hub and spoke model, it greatly widens system solutions provided by the new building.
- The spokes would be to GP practices not in the centre itself, to facilities and services on the high street, to and from the local hospital, voluntary/complementary services, charities, community and mental health providers.
- There is the potential to maximise patient facing services in localities whilst moving office based, or multi-professional meetings or e-Hub work to the space in the Pioneer Centre.

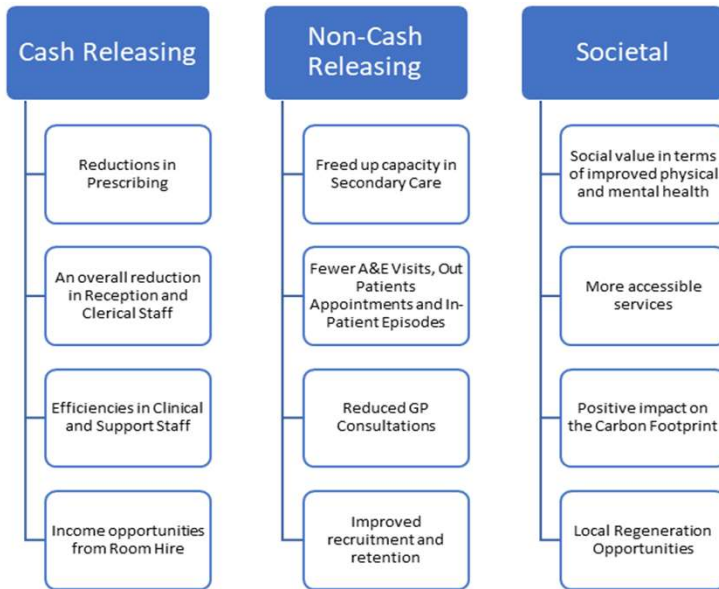


Services/Facilities to be Provided

Provider	Service
GP Practices	Three GP practices with 24,000 list size (forecasting increase to 32,000 in 2035)
PCNs	Two PCNs providing Additional roles/services and an e-Hub (slide 4)
Community Childrens Services	Community services 0-19s, School Nursing, Health Visitors, Paediatric Therapies sensory room (with specialist equipment TBC) and clinical rooms, Paediatric Audiology, Children's Safe Guarding Team Immunisation Team (plus Admin)
Community Adult / Corp'te services	OOHs Nursing team, Imms, Safeguarding, Community Nursing Service, Podiatry, Wound Care/Lymphodema Team, Speech and Language Therapy, Community Rehabilitation, Older Adults/Frailty Prevention
Ashford St Peters Hospital	Ultrasound, Paediatric Outreach, Maternity Hub (anti & post natal, feeding support etc), MDT/GP Hub Clinics
Mental Health	GPIMHS, CAMHS (bookable space), Catalyst MH Charity, adult safe haven
Citizens Advice Bureau	Advice on legal, debt, consumer, housing and other problems
Community Dentistry	Special Care & Paeds
Voluntary / Wellbeing services	Active Surrey , Community Kitchen, Centre Café, Voluntary Support North Surrey, North Surrey Domestic Abuse Service, group rooms for physical/wellbeing activities
Others	Adult Social Care (hot desking), business links (e.g A2 Dominion, Pinewood, Maclaren), plus others as the centre develops



Intent & Benefits

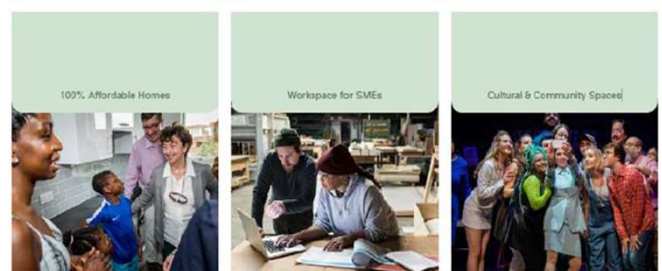


- A system owned and maintained asset
- Provides much needed space/capacity for 3 x GP practices and 2 x expanding PCNs
- Frees up vacated space within current estate portfolio
- Sale of Staines health Centre land
- NHSE/I investment available
- Provides state of the art flexible, adaptable spaces for the entire local community
- Integrates place based health, care and support services
- Provides opportunities for local businesses to participate/engage with community
- Integration with affordable residential homes and a cultural centre
- Act as a hub to the local community within a 'Campus' health & wellbeing site

Wellbeing - Strong Community



Wellbeing - Life Opportunities



Wellbeing - Health

