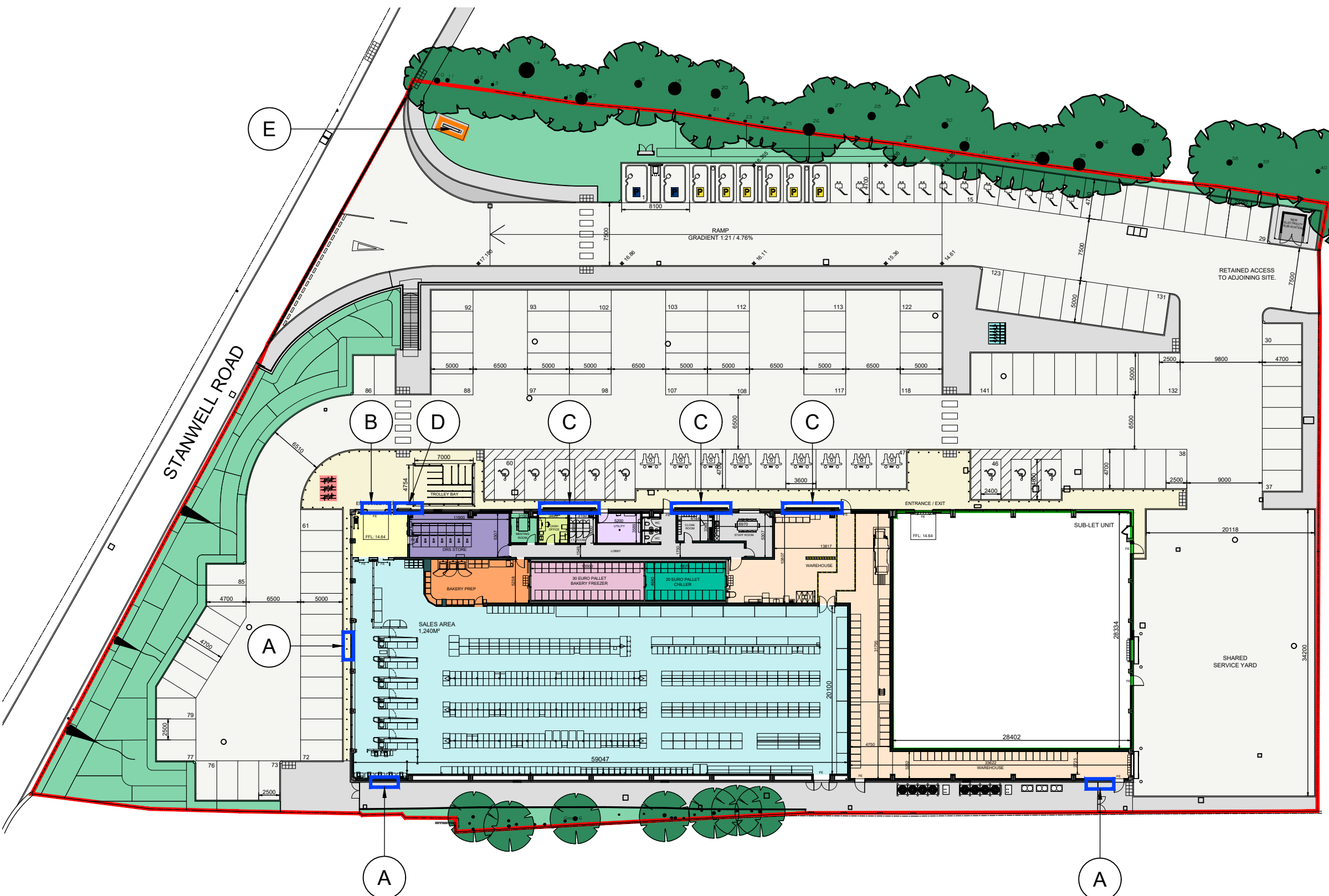


Rev	Date	Reference	Drawn / Chk'd
P04	2022/10/05	SIGNAGE LOCATION 'E' UPDATED.	AA AA

SCHEDULE OF ACCOMMODATION - KEY

- Site Boundary 1.076ha (2.658 acres)
- Approved Sign Locations Refer to approved drawings 4415-1000, 1001 and 1002 for details (20/00764/ADV).
- Proposed Sign Location Refer to drawing 4415-1002 P03 for details.



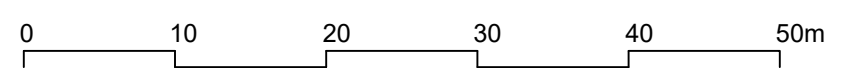
Client
Lidl Great Britain Ltd

Project
**Lidl
Stanwell Road, Ashford**

Title
Signage Location Plan

Drawing Ref. 4415-1003 Revision **P04**

Scale - unless otherwise stated 1:500 @ A3 Status S0 Issued For Preliminary



KLH architects
The Old Steelyard, Poplar Lane
Sproughton, Ipswich, IP8 3HL
t.01473 689532
klh@klharchitects.com
www.klharchitects.com